



GERSTEL Dynamic Load and Wash

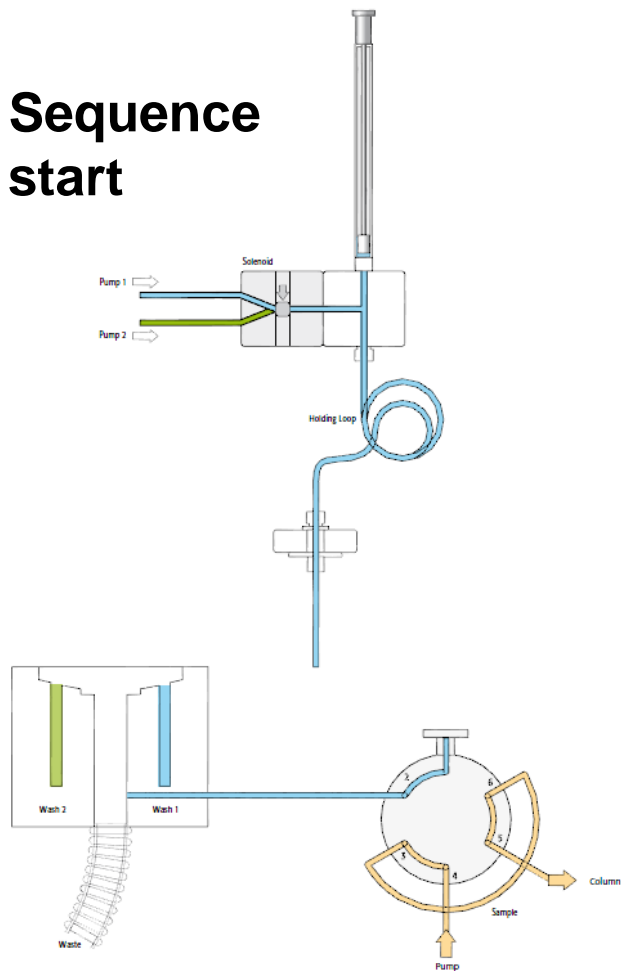




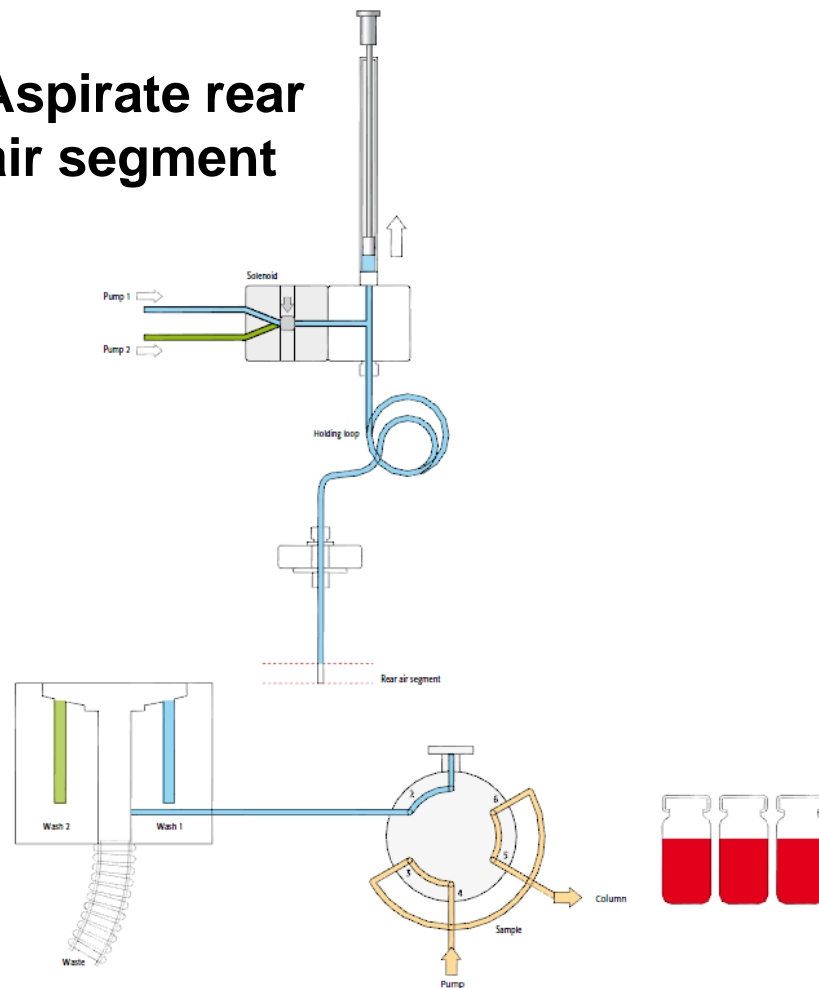
DLW

Fast DLW Step-by-Step

1 Sequence start



2 Aspirate rear air segment

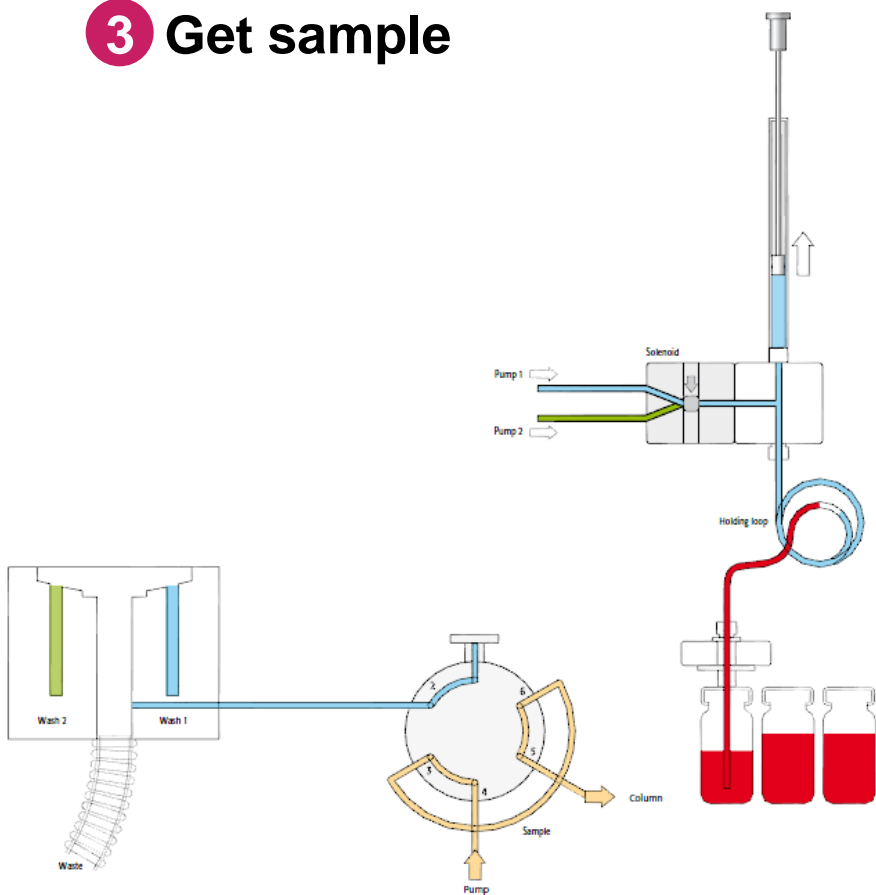




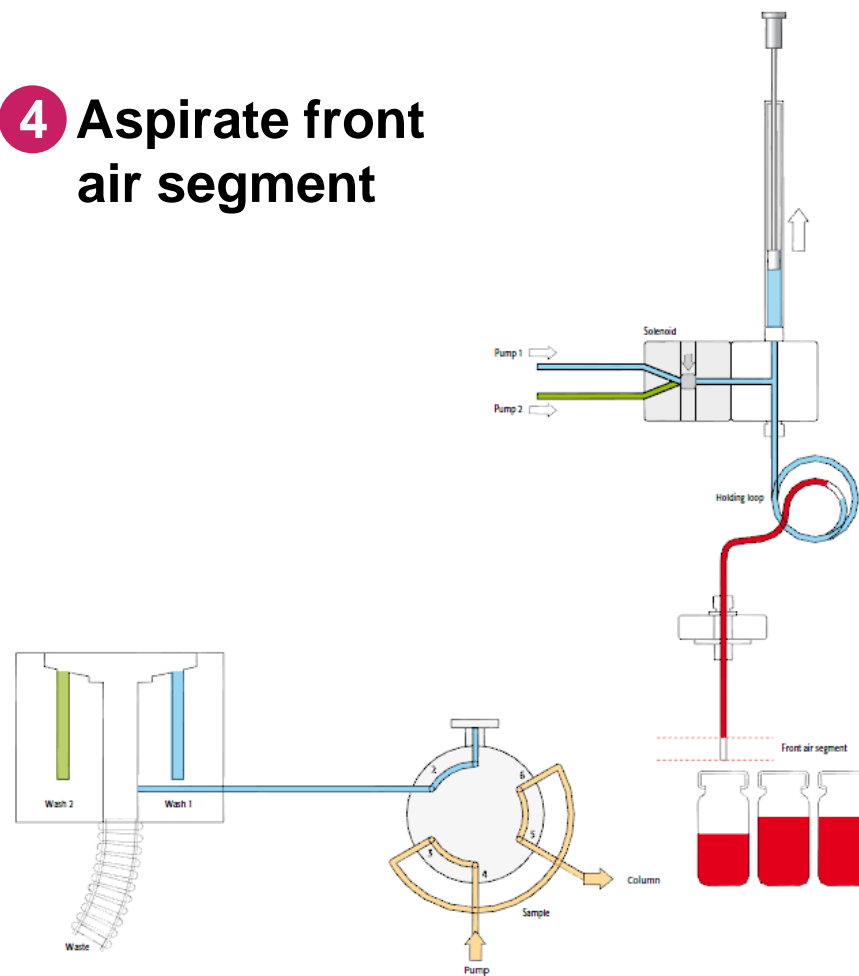
DLW

Fast DLW Step-by-Step

3 Get sample



4 Aspirate front air segment

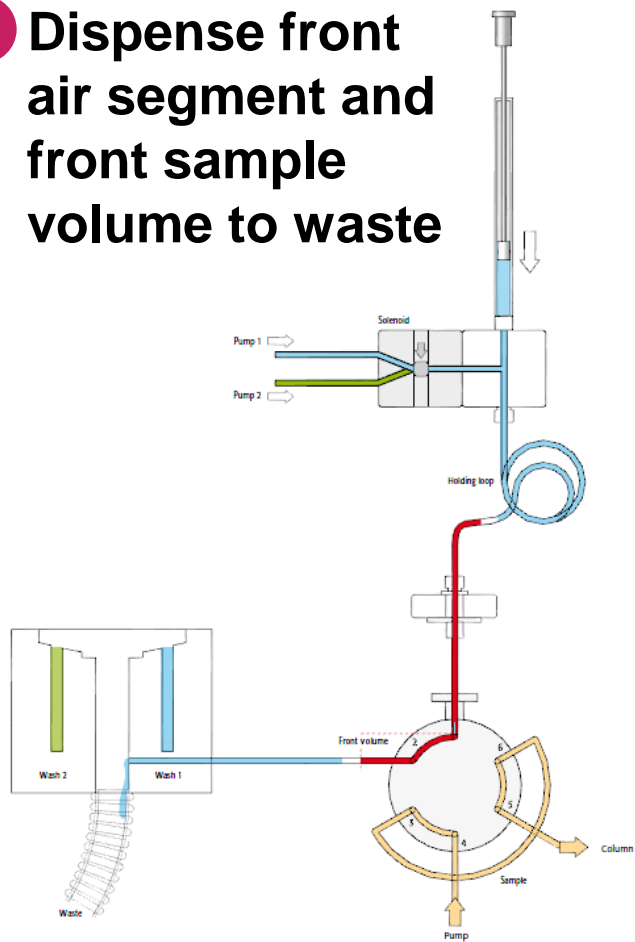




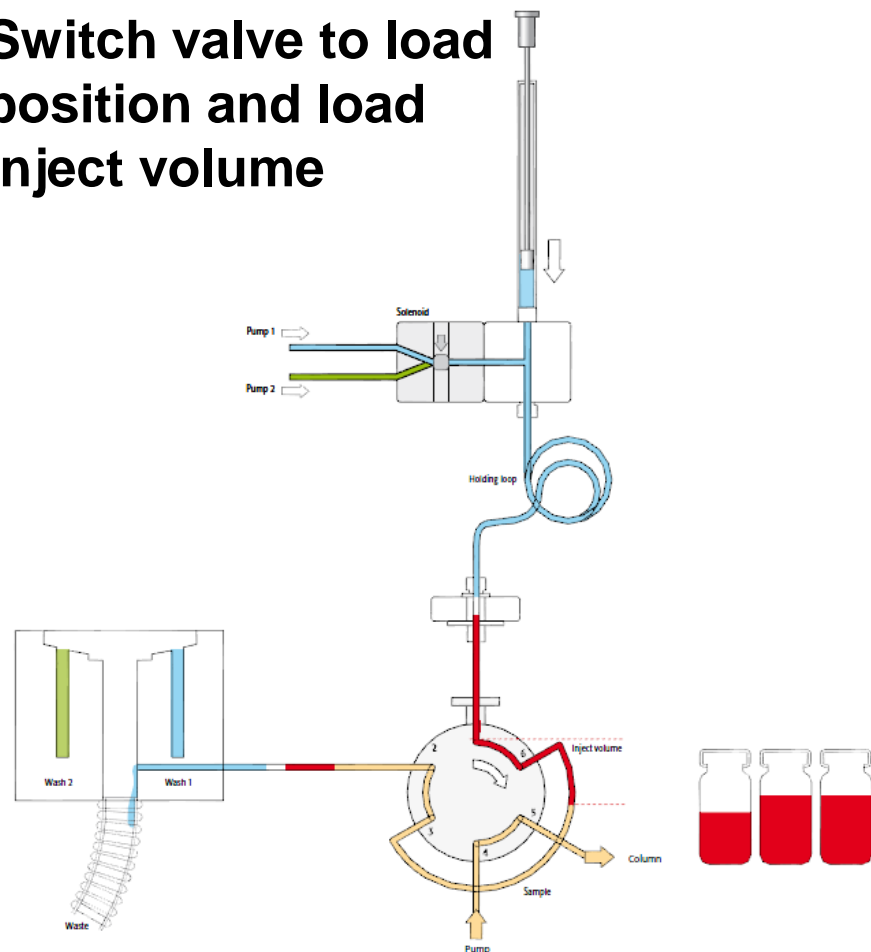
DLW

Fast DLW Step-by-Step

5 Dispense front air segment and front sample volume to waste



6 Switch valve to load position and load inject volume

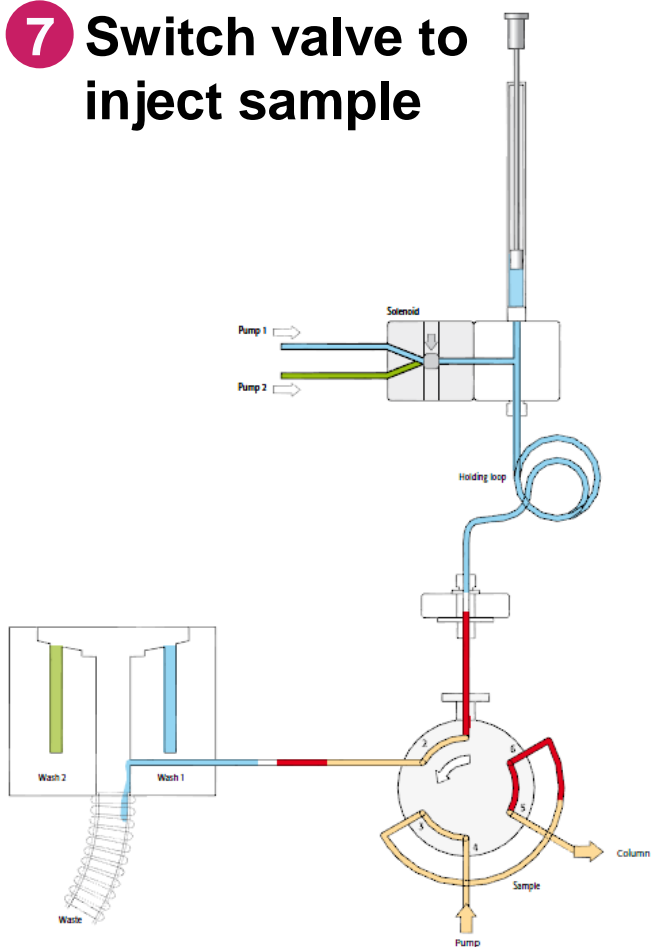




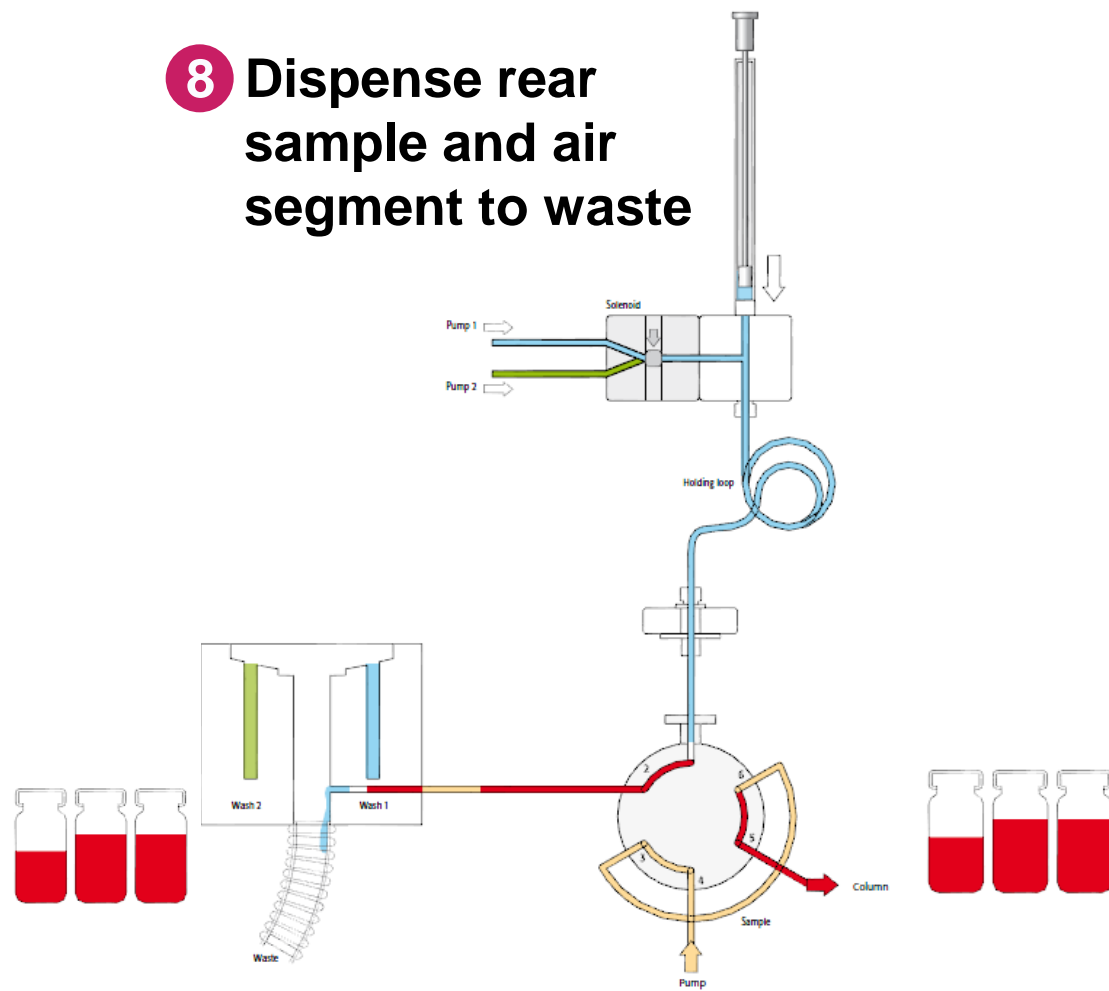
DLW

Fast DLW Step-by-Step

7 Switch valve to inject sample



8 Dispense rear sample and air segment to waste

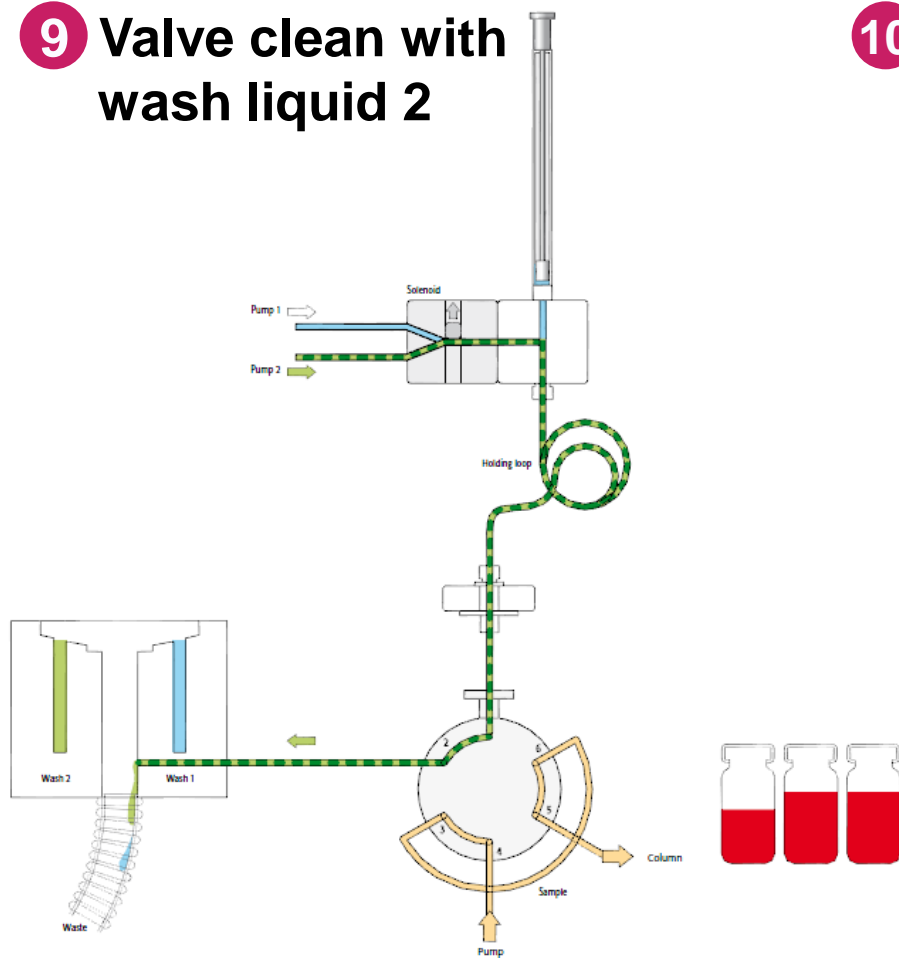




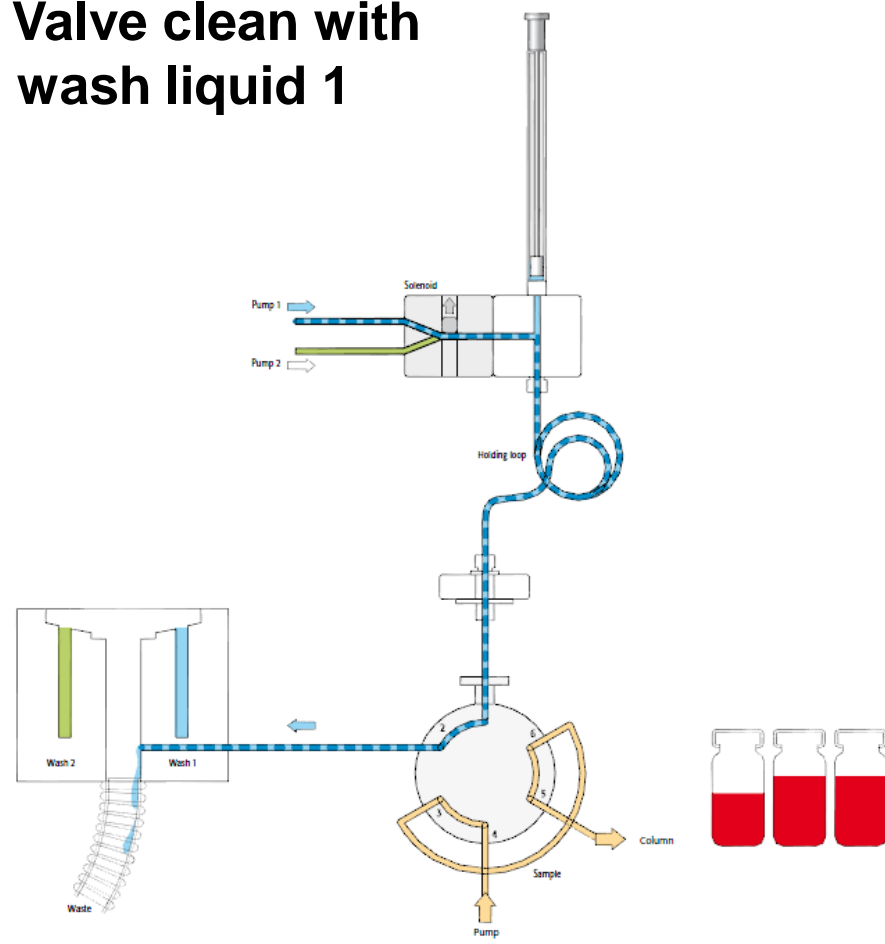
DLW

Fast DLW Step-by-Step

9 Valve clean with wash liquid 2



10 Valve clean with wash liquid 1

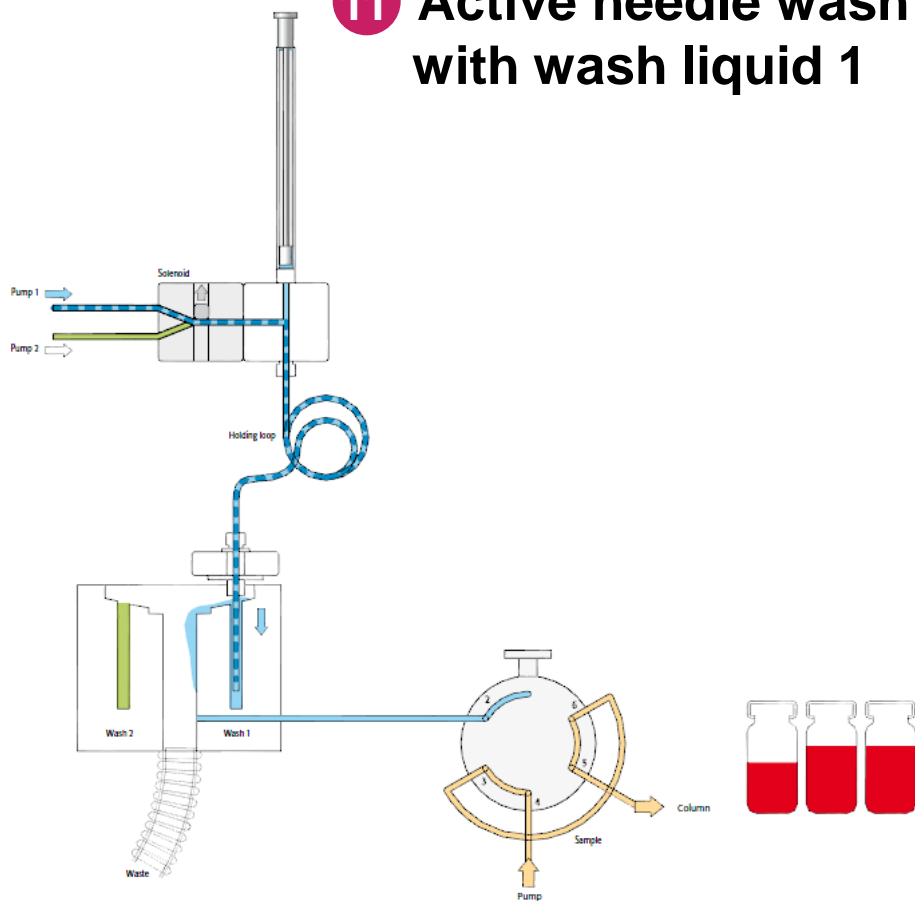




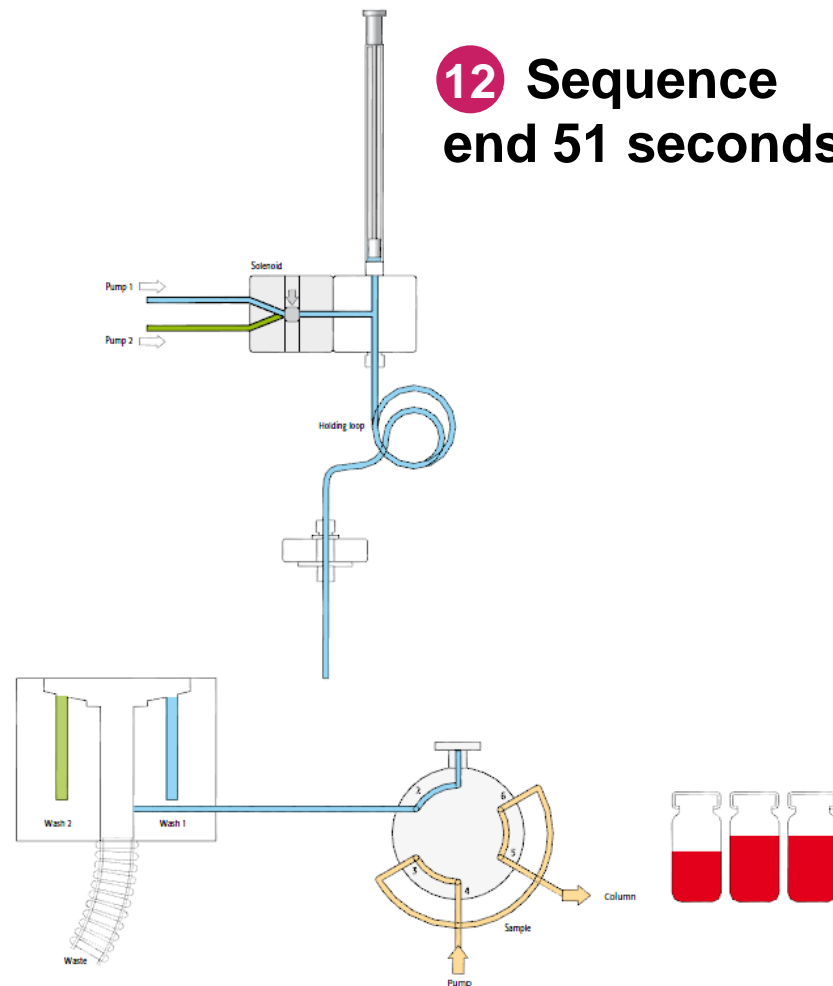
DLW

Fast DLW Step-by-Step

11 Active needle wash with wash liquid 1



12 Sequence end 51 seconds





DLW

Load and Wash Sequence Time

